

BEDFORD PUBLIC SCHOOLS

SUPERINTENDENT'S NEWSLETTER



Fall, 2001

Special points of interest:

- Superintendent's Message
- Emergency School Closing
- Health Services
- New Administrators
- Special Education
- Calendar of School Events

It is a distinct honor for me to pen this initial message to the residents of Bedford as your new superintendent of schools. For the past four years I have been privileged to serve you as assistant superintendent and to have a "master" superintendent, Joseph Buckley, as my mentor. For all of us involved in the Bedford Public Schools, the retirement of Mr. Buckley marks a significant change; his legacy of tenacious advocacy for children and unwavering respect for differences, however, remain a part of the fabric of the many individuals and the system he so ably molded.

With the start of the 2001-2002 school year, significant change is in the air as we welcome 32 new teachers and 3 administrators to the Bedford Public Schools. New administrators include Vicki Simms, Assistant Superintendent; Thomas Campbell, John Glenn Middle School Principal; and Henry DeRucha, Director of Research and Technology. In addition, with the retirement of two key Program Administrators, we congratulate Michael Griffin on his promotion to the position of Program Administrator for Science and we welcome aboard Marcia Burns, Program Administrator for Career Education. Those of you familiar with a recent bestseller, Who Moved My Cheese?, which cleverly describes our varying abilities to adapt to change, will appreciate the administrative team's adoption of this as a "textbook" to help us analyze ourselves and one another during the upcoming school year. As we consider our individual and collective ability to respond to change, it is my hope that more often than not our behavior will replicate the behavior of the character "Sniff" who is most successful in discovering and embracing the new possibilities inherent in a rapidly changing environment.

One of our key initiatives for the 2001-2002 school year will be the development of a 2011 Vision Statement. Long term Bedford residents will probably remember the development of the 2001 Vision Statement. For the last decade that vision has served us well by informing and supporting Bedford's continuous advancement in the instructional technology arena. That vision has distinguished Bedford in the educational community enabling us to acquire competitive grant dollars which support our classroom teachers as they pilot new technologies and refine instructional practices.. It is now time to revisit that vision and "imagine" where we want our schools to be in 2011. With your input and wisdom, we hope to develop a vision that will serve the schools well for the next decade.

The other initiative I would like to highlight here is the onset of the John Glenn Middle School addition/renovation project. Later in the newsletter you will find an update on the nuts and bolts of the project. What I want to underscore is how this project serves as a visible symbol of why Bedford is such a special place to work. As you know, we opened the bids for this project on June 1 and were dismayed to find that the lowest bidder exceeded the cost estimates by 16.5%. What happened after June 1 is a story that, in my view, warrants a special place in the local archives. All the town leaders joined the Bedford School Committee and the JGMS Building Committee with one goal in mind: Identify the scope of the problem and come together to formulate a solution. That teamwork translated into the scheduling of a July 2 Special Town Meeting where the residents overwhelmingly approved the project. I cite this event because to me it provides a vivid example of how your town values and provides for its children. To say that there are few places that can measure up to Bedford is an understatement. For those of us who work in public education, it doesn't get any better than this.

We look forward to serving you well during the upcoming school year and encourage you to contact us to share both your insights and concerns.

Maureen L. LaCroix, Ed.D.
Superintendent of Schools

Inside this issue:

Middle School Construction	2
Curriculum Highlights	2
Personnel Changes	4
MCAS Test Dates	6
Title IX Notification	7
Web Page Bookmark	8
School Lunch Program	9
Elementary Conferences	9
School Telephone Numbers	10

John Glenn Middle School Construction Update

The affirmative vote of a July 2nd Special Town Meeting enabled us to begin the addition/renovation of the John Glenn Middle School.

On July 16th asbestos abatement contractors began their work on the first floor ceilings and floors. As this newsletter goes to press, the contractors are ahead of schedule on this aspect of the project. The asbestos removal contractors will leave the site prior to September 4th.

Air quality testing will be completed prior to the return of teachers and students.

Summer site work also included preparing the parking lot. The parking lot has been divided into two sections by a chain link fence. Construction workers' parking is in the section closest to the tennis courts; faculty and staff will park in the area closest to the building. Construction activity has also included bringing in bulldozers and backhoes. Excavation and site preparation for the new twelve-room addition has begun in the rear of the school. As a result of this, dump trucks have been coming and going removing debris from the site. Trucks enter and exit via Railroad Avenue.

In October steel delivery to the site will begin. Trucks will enter and exit via Railroad Avenue. During this first year all work will be external to the building with one exception. The work will be the twelve-room addition on the rear of the building. The one exception mentioned above will occur in the basement of the building

where workers will be running pipe and wires. No work will take place inside the main schoolhouse.

The first year will probably be the lesser complicated of the two-year project, as all work will be done in the basement or external to the current building.

Curriculum Task Force Highlights

The Bedford Curriculum Task Forces continued to respond to the development of statewide accountability requirements as defined by the Massachusetts Board of Education. Their work includes program development, the creation of professional development offerings, and documentation of efforts made to align the curriculum to the changing Massachusetts Curriculum Frameworks. As the implementation of the CLASP program (an electronic tool for accessing statewide MCAS results) continues, staff are networking with other school systems to examine opportunities for modifications appropriate to our school district. This use of technology as a tool for investigation and data collection is critical as we proceed in the direction of curriculum development.

During the summer months, teachers completed a draft for the new English/Language Arts Massachusetts Frameworks. As a product of their work, a cross reference document was created indicating the differences between the former Frameworks, the 2001 Frameworks and the Bedford ELA standards. The development of a literature based reading program in grade 6 was also completed in anticipation of MCAS testing in literature at

the grade 7 level. The Writing Integrates Technology (WIT) team continued its grant funded work by creating writing exemplars for grade level assessment. Samples of student work (anchor packs) were assembled as a training tool for all teachers. A guide including sections on Open Response questions and alignment to local benchmarks completes the language arts summer projects.

In July the MEET Team from JGMS formed and began its work. JGMS teachers received a \$30,000 grant to support a comprehensive Science curriculum initiative which infuses the use of technology into classroom practice. Residents will be able to "view" some of this work on a student created web page designed to chronicle the JGMS addition/renovation project

The K-5 Mathematics Task Force completed a comprehensive curriculum revision which aligns Bedford's curriculum with the new frameworks. In September all K-5 teachers will participate in professional development focused on understanding Bedford's implementation plan in this area.

In the area of Social Studies – Social Sciences, a combined group of elementary and middle level teachers will examine the coordination of course offerings in Ancient Civilizations. In light of revisions to the Massachusetts Frameworks, modifications and adjustments will involve establishing specific areas of study within grade 4 and 6 courses. As a separate focus, grade 2 teachers developed units on Native Americans. The guide consists of sections, many containing background knowledge, articles, web sites and lessons about Wampanoag and other cultures throughout the United States. The Science Curricu-

Curriculum Task Forces, Cont.

lum team completed work integrating technology into the science classroom. Teachers experimented with Lab Pro/Logger Pro systems. These systems allow students to collect real time data and perform analysis on the data using a computer or T1 calculator. Classroom instruction will focus on learning by design and through problem solving experimentation.

Project W.E.T.T. elementary school teachers created activities focusing on the essential question "What makes a wetland?" Additional prepared kits on hands-on science instruction have been added to the elementary grades in response to changes in the Massachusetts Curriculum Frameworks. These STC kits are titled "Solids and Liquids"; "Rocks and Minerals"; Magnets and Motors"; and "Weather Collaboration".

In mathematics, a new technology based class will be offered at Bedford High School addressing the needs of specific students. Using Web based programs, teachers will remediate learning deficits for students in grade 9 and 10 in anticipation of the Spring MCAS testing. This program was begun in the summer and will continue as school opens in the fall.

Elementary teachers examined the revision of the *Everyday Math* program, determining the sequencing of instruction as required in the State Frameworks. All teachers developed open-response questions for each of the five strands as a part of a larger project of creating a guide on the use of open response questions in the ele-

mentary schools. An assessment tool to be administered periodically to all students at each grade level was developed, with the understanding that this is only one means of assessment necessary to evaluate student progress.

Foreign Language teachers completed the curriculum guides for the grade 5 Spanish and grade 4 French programs. New grade 6 Spanish texts were selected with the intent to complete the grade 6 curriculum guide



within the upcoming school year. High school department members created learning standards for the department and will store them in CLASP in the fall.

A complete K-12 curriculum guide in music will be published during the upcoming year. A revision of the High School Humanities course was completed over the summer as a part of this work. The art department as well conducted their examination of the Frameworks, matching Bedford Curriculum standards to the state guidelines. The publication of their standards will be completed at the end of next summer.

In addition to the curriculum alignment work already mentioned, teachers were involved in professional development funded by the Department of Education. At the middle school, a team of teachers participated in a week of training at Bridgewater State College pursuing technology use in both math and science. Funded by a \$30,000 Massachusetts (MEET) Technology grant and under the direction of WGBH, TERC and CAST organizations, the team will share their experiences with colleagues and present their project throughout the year at Department of Education workshops. The MEET grant provides free system-wide software application licenses for instructional use.

At the elementary level grade two teachers created, developed and designed a new progress report which reflects standard-based instruction. The teachers looked closely at the standards to determine how the document would be integrated into daily assessment practices. By surveying other report cards from surrounding towns, the committee found a unique way to convey information to the school and community. The new and improved progress report will be piloted during the 2001-2002 school year.

As the 2001-2002 school year begins, we continue to use technology as a tool for instructional practices and as a resource for networking the Bedford standards with the Massachusetts Frameworks and other school systems

Curriculum Task Forces, Cont.

throughout the Commonwealth. The system-wide commitment to professional development opportunities that include mentoring, heightening the understanding of standards based instruction, and the development of a growing repertoire of instructional practices assures our students a quality education.

PERSONNEL CHANGES

New Faculty Faces

Samuel Agyenmang – (High School, Social Studies)
Charles Alperin – (High School, .5 Adjustment Counselor)
Heather Anderson – (High School, Chemistry)
Jodi Beharrell – (Middle School, Special Education)
Erica Borroto – (High School, .8 Business Education)
Marcia Burns – (High School, Program Director, Career Education)
Nadine Coletta – (Middle School, Grade 6)
Guy Compagnone – (Middle School, .6 Technology)
Theresa Concannon – (Lane School, Special Education)
Julie DeMatteo – (Davis School, Special Education)
Krista Denaro – (Lane School, Grade 3)
Eric Dube – (High School, Science)
Suzanne Escher – (Davis School, Grade 2)
Rachel Field – (Middle School, .5 Foreign Lang.)
Karen Gill – (High School, .6 Social Studies)
Kelly Gullage – (High School, Special Education)
Paul Harrington – (Middle School, Art)
Karen Haswell – (High School, Science)

Jane Harvey – (High School, English)
Janet Houston – (Davis School, Grade 2)
Trisha Kraeger – (Middle School, Special Education)
Jennifer Larrenaga – (Lane School, Grade 4)
Edna Lee – (Lane School, Grade 4)
Sally Manfredi – (Middle School, Family and Consumer Science)
Ann Nicholson – (High School, .5 Reading/.5 Special Education)
Rebecca Ovans – (Lane School, Special Education)
Katherine Paul – (High School, .4 Dance)
Scott Smith – (Lane School, Grade 4)
Melissa Warrender – (Davis School, .2 Grade 2)
Joseph Zahka – (High School, Physics)
Lenore Zavalick – (Lane School, Grade 5)
Alane Zuppa – (High School, English)

New Support Staff

High School

Eugene Amico, In House Suspension Teaching Assistant
DePaula Balich, Teaching Assistant Sped
Preston Carmichael, Computer Network Assistant
Lou Zwirble, 504 Teaching Assistant

Middle School

Louise Bentley, Food Services
Marie Jackson, Teaching Assistant Sped
Heather Wright, Teaching Assistant Sped

Lane School

Kristen Finck, Teaching Assistant Sped
Emily Fuller, Teaching Assistant Sped
JoAnn Ovadia, Teaching Assistant Sped
Sheila Sadler, Teaching Assistant Sped

Angela Zingarelli, Teaching Assistant Sped
David Candar, Custodian

Davis School

Tracey Faulkner, Kindergarten Teaching Assistant
Patricia Forristall, Teaching Assistant Sped
TeriAnn Hamerla, Kindergarten Teaching Assistant
JoLinda Jackson, Building Assistant
Cori Lappin, Teaching Assistant Sped
Lesley Saakey, Teaching Assistant Sped

New Assignments

High School

Michael Griffin, High School, PA Science
Lisa Roach, High School, English
Paul Stevens, High School, Science

Middle School

Linda Barbacano, Food Services Director
Kerry Doherty, Middle School, Science
Andrea Foley, Middle School, Reading
Terri Gerrish, Middle School, Grade 7 Mathematics
Paul Loscocco, Middle School Skills Center Teacher
Marie Mallott, Middle School, Grade 6

Elementary Schools

Diane Gallo, Davis School, P.E.
Beth Kern, Lane School, Grade 3

Personnel Changes, Cont.

Retirees

We would like to take this opportunity to wish all of these teachers much success in their future endeavors as they retire.

High School

Kathleen Ambrose, Home Ec.
William Corliss, Business Education
Charles DiPietro, PD – Career Ed.
Catherine Krueger, PA – Science
Marilyn Light, Special Education
Gregory Norton, Science
Leonard Palmer, Science
Patricia Pellegrini, Social Studies

Middle School

Benjamin Maxwell, Principal
Robert Mercaldi, Mathematics
Effie Tsefrekas, Home Economics

Elementary Schools

William Cronin, Lane School
Anne Erwin, Lane School
Irene Glennon, Davis School
Charles Murphy, Lane School
Esther Peel, Lane School



Vicki Simms
Assistant Superintendent

Ms. Vicki Simms joined the Central Office as Assistant Superintendent on August 7, 2001. Ms. Simms comes to Bedford from the Andover Public Schools where she served as Principal of the West Middle School for six years. Prior to Andover, she was As-

sistant Principal and Foreign Languages Coordinator at the Diamond Middle School in Lexington.

Ms. Simms received her B.A from Kalamazoo College in Michigan and her M.A. from Simmons College. She has also studied at the Sorbonne in Paris and at UMass Lowell and Appalachian State University in Georgia.

Ms. Simms believes “the goal of school learning is rigorous, disciplined knowledge in the curricular sequence that starts with the child. Knowledge must be organized around the lives of children, connected through an understanding and appreciation of their personal and social interests”.

Please take the opportunity to meet Ms. Simms at upcoming school events and/or meetings.



Thomas Campbell, Principal
John Glenn Middle School

Mr. Thomas Campbell is the new Principal of the John Glenn Middle School. He began his tenure on July 16th. Prior to the principalship here in Bedford, Mr. Campbell served as Principal of Watertown Middle School and as an Assistant Principal with the Canton Public Schools. He also served as Director/Principal of the Franciscan Children's Hospital in Brighton.

He received his B.S from Lesley College, his Master of Education in Special Ed and a Master in Middle School Education, also from Lesley College, Cambridge, MA.

At Watertown Middle School Mr. Campbell was responsible for oversight of curriculum development, supervision and evaluation of faculty and staff, supervision of teachers' instructional practices, and the implementation of strategies to effect student achievement in a standards-based environment.

We hope you will take an opportunity to meet at various functions during the year.



Henry DeRusha, Administrator
Research and Technology

Dr. DeRusha is the new Administrator for Research and Technology. Dr. DeRusha comes to us from the Brookline Schools where he was a K-8 Instructional Technology Specialist. Prior to that he spent twenty-four years in school leadership as a superintendent of schools in Sudbury, MA, an elementary principal in Newton, MA, K-12 curriculum coordinator and instructional technology specialist. He is also a Senior Lecturer at Lesley College.

Dr. DeRusha received his B.S in Education, majoring in elementary education, from State College, North Adams, MA, his Master in Education, majoring in administration and supervision, from Boston University, and his Doctor of Education Degree from Boston College.

Dr. DeRusha is committed to expanding the use of technology so that it is seamlessly integrated into the curriculum and instructional practices.

Special Education

Bedford's Special Education Department works cooperatively with regular education teachers and school administrators to maximize the learning potential of all students with special needs. Each of our schools continually strives to expand its ability to meet the diverse needs of children in the regular classroom. When academic difficulties continue to persist after pre-referral strategies have been tried, a request for a Team Evaluation may be appropriate.

The Evaluation Team, which includes the classroom teacher, specialists and parents, conducts assessments relevant to the student's specific area(s) of difficulty. This process is guided by the mandates of the Massachusetts Department of Education, including the recently revised Special Education regulations as well as the dictates of the Federal Law (I.D.E.A.). The Team's responsibility is to determine whether the student is eligible for Special Education services and identify what services and/or classroom modifications will support the student's success in school.

The Evaluation Team develops an Individualized Educational Program (IEP) for those students who meet the Massachusetts Department of Education eligibility criteria. Based upon the Team's recommendations, the Bedford Special Education Department provides services in identified areas of deficit, which can include learning disabilities, speech and language, fine and gross motor control, daily functional living skills and social/emotional adjustment. In keeping with Bedford's long established policy on inclusion, services are provided within the context of the regular classroom whenever possible. There is a small percentage of identified special needs students who require specialized instruction in a separate setting. For these students with low incidence

disorders, the Evaluation Team may recommend placement in a private 766 school or in a Collaborative program.

MCAS 2001—2002 TESTING DATES

Test	Dates
Gr. 10 Retest	December 11—ELA Comp. December 12—ELA Comp. & Literature December 13—Mathematics December 14—Make-up
Gr. 3 Reading Test	April 2, 3, 4, 2002 April 5, 10, 2002 Make-up
Gr. 4, 7, 10 English Language Arts	April 9, 2002 May 9, 2002—Make-up
Gr. 4—10 English Language Lit. Mathematics Science Technology/Eng. History & Social Studies	May 13, 24, 2002
Gr. 10 English Language & Literature	May 14, 2002
Gr. 10 Mathematics	May 16, 2002
Make-up	May 28 & 29, 2002

"The goal of school learning is rigorous, disciplined knowledge in the curricular sequence that starts with the child."

Vicki Simms

Policy Notification on Statement Regarding Title IX, Chapter 622 & Section 504

It is the policy of the Bedford Schools not to discriminate on the basis of sex, sexual orientation, race, religion, color, national origin, or handicap in its educational programs, activities or employment policies as required by Title IX of the 1972 Educational Amendments and Chapter 622 of the Acts of 1978, or Section 504 of the Rehabilitation Act of 1973.

The Title IX Coordinator for the Bedford Public Schools is the Assistant Superintendent, Ms. Vicki Simms, 275-

2155. Inquiries may also be directed to the Department of Education; or to the Director of the Office of Civil Rights, Department of Health, Education and Welfare, Boston. Inquires regarding compliance with regard to Section 504 may be directed to the Administrator of Special Education, 275-1700 Ext. 159 or to Section 504 Coordinators:

Lt. Eleazer Davis School
Ethel Furst

Lt. Job Lane School
Thomas Nolan

John Glenn Middle School
Thomas Campbell

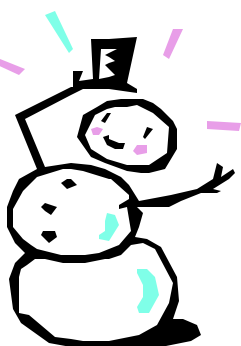
Bedford High School
Jonathan Sills

Harassment Complaints should be reported to the Building Principal or the Superintendent/Assistant Superintendent.

Emergency School Closing

POLICY

The Bedford Public Schools will close only in emergency situations when weather or highway conditions make travel to the schools hazardous or when power or heating failures occur. Parents are urged to exercise their personal judgment concerning the wisdom of sending their children to school on stormy days when schools are in session. Schools are closed in staggered order: High School, Middle School, Lane School, and Davis School.



LOCAL SIGNALS

The Bedford Fire Department will sound the fire horn signal 2-2-2 at 6:45 a.m. which signifies that the High School and Middle School are closed for the day. The same signal will be sounded at 7:15 a.m. when the elementary schools, Grades K-5, are canceled for the day.

RADIO AND TV ANNOUNCEMENTS

Radio stations cooperating with the schools in making no-school announcements include the following AM stations: WBZ-103; WBUR; WRKO/WBMX. FM Stations: WVBF-105; WMX-106.7; WBUR-90.9 and WXLO-104.5. WBZ Channel 4; WCVB-TV Channel 5 and WHDH-TV Channel 7.

Occasionally, the telephone lines become so jammed with calls from school officials to radio stations, that this fact makes it advisable to try more

than one of the stations listed above.

Please do not call the Police or Fire Departments and jam their telephone lines as they should be kept open for emergencies.

EARLY RELEASE OF STUDENTS

Occasionally a severe, unexpected storm may necessitate a decision to close schools early. This has not happened very often in the past, but can cause anxiety for families without a plan for this possibility. Students whose parents work or are not usually at home during the day should have an alternate home in the neighborhood to go to until their parents return. Decisions to close early in these situations are made on short notice, and there is not time to locate and inform parents. For that reason, students should be sure of their alternate homes before the storm season arrives.

Health Services

Health Services are provided by Board of Health Nurses assigned to each school as follows:

Nancy Thorsen, RN—High School
275-1700 ext. #141

Carol Eaton, RN—Middle School
275-3165

Kathy Donati, RN—Lane School
275-7606

Tracy Fernald, RN—Davis School
275-6804 ext. #3

Kathy Webster, RN—p/t @ all schools

School nurses welcome health inquiries and discussions regarding any health issue or concern.

School Physician services are provided via Dr. Toby Nathan's office with Patricia Moody, PNP and Mary Levenstein, PNP as primary contacts.

Ginny Malouin, High School Nurse for 14 years retired this past January. We wish Ginny health and happiness in her retirement.

PHYSICAL EXAMS:

There are two types of physical examination reports required in school.

The first type of examination report is the comprehensive physical exam. Documentation of comprehensive physical exams must be provided to the school nurse for each student upon entrance to kindergarten, and again during the 3rd, 6th, and 9th grades. Apart from being a state mandate, school nurses need a copy of comprehensive physical exam reports in order to remain up to date with students' health history records, i.e. new diagnoses or immunizations.

The second type of examination report is the sports physical exam. Documentation of sports physical exams must be current and dated within a year of participation. This is a Massachusetts Interscholastic Athletic Association (MIAA) requirement and it is strictly enforced. Please forward all sports physicals to the school nurse. Sports physical exams are a specialty exam involving specific issues including, as an example, "*range of motion*".

We encourage students and student athletes to have their private physician perform the required examinations. The best time to have an examination is at the end of the school year or during summer.

A sports physical exam form has been prepared and can be obtained by asking the school nurse. Parents of 6th and 9th grade students can take note that the form as supplied by the school nurse, when completed and returned to the school nurse, can satisfy both requirements for that year.

OTHER HEALTH INFORMATION:

If you do not have health insurance and need financial assistance for health care services, there is a publicly funded program providing comprehensive health services for eligible families. To obtain additional information please call 1-800-531-2229. There is also a privately funded health insurance plan known as "Blue Health Plan For Kids" with eligibility from birth through age 19 years. Call 1-800-262-3564 for more information.

Bookmark It! - Introducing the Central Office Web Page

Please take the time to visit our "new and improved" Central Office web page. It was designed to be both useful and user-friendly, and hopefully it will become a favorite site of yours.

This summer we were fortunate to have retained the services of intern Josh Eriksen, an incoming senior at the Boston University School of Management. Josh brought with him to Bedford a wealth of business and finance experience, but more importantly, a strong work ethic and creative mind. The result of his hard work is a web site that Bedford should be

proud of, and it is bound to be a model for other communities.

The web site is broken down into three main categories:

Superintendent's Office: Click here for information regarding curriculum, superintendent's goals and objectives, crisis planning, school construction projects, and contact information.

Business Office: This link leads you to business office contact information, budget summaries, bus transportation information including current year bus routes, and school lunch menus.

Special Education: This section is still under construction.

Find us by going to the Bedford Public Schools' home page at www.bedford.k12.ma.us and clicking on the **Central Office** link.



School Lunch Program

Welcome to New Director

We are pleased to announce that Linda Barbacano has been named interim Food Services Director for the 2001-2002 school year. Linda has worked for the school lunch program for over four years in an assistant's capacity, and is well prepared to provide strong leadership and creative menu planning in her new role. Mrs. Barbacano, whose office is located at the John Glenn Middle School, welcomes input from parents, students and teachers. She can be reached at 781-275-9129.

School Lunch Pricing

- The cost of lunch is \$1.35 for elementary students and \$1.50 for middle and high school students. All meals include entrée, fruit

and/or vegetable, juice, milk and bread item. In addition, a la carte milk is sold daily at all schools at a cost of \$.40 per carton.

- Every household is eligible to apply for free or reduced price meals. Applications are sent home with each student during the first week of school. Reduced price meals at all levels are \$.40.
- Cash is accepted at all locations except for Davis School. Davis offers a pre-payment debit card system only. The card will be used for lunches and a la carte milk. For more information concerning the debit card system, please call the School Lunch Office at 781-275-1700 x 180 or the main office at Davis School at 781-275-6804.

- Both the High School and Middle School offer many different a la carte items and menu alternatives, including a "super lunch", which consists of double portions on any two menu items at a price of \$2.50. Lane Elementary School also offers a "super lunch" for \$2.35.

Nutritional Information

Following federal regulations for the National School Lunch Program, the Bedford Public Schools Food Services offers a complete, balanced lunch to all students daily and does not deep fry any of its food. We offer a variety of fresh, frozen, and canned fruits and vegetables. Any concern about food allergies can be discussed and researched to determine high risk foods.

Elementary Conferences—2001-2002

KINDERGARTEN & FIRST GRADE ORIENTATION

First day of Kindergarten and First Grade is Thursday, September 13th.

September 5, 6, 7, 11, 12 Kindergarten Orientation

September 5, 6, 7, 10, 11, 12 First Grade Orientation

FULL-DAY TEACHER WORKSHOPS

October 5
January 18
March 15

ELEMENTARY CONFERENCES

"IMPORTANT"

Conferences for Davis and Lane Schools will be scheduled during the school day. Dates and times to be announced.

WORKSHOP DAYS—EARLY DISMISSAL

September 26	January 9	April 3
November 7	February 6	May 1
December 5	March 6, 29	June 5

BEDFORD PUBLIC SCHOOLS

11 Mudge Way
Bedford, MA 01730-2166

******ECRWSS******

NON-PROFIT
ORGANIZATION
U.S. POSTAGE

PAID

Permit No. 44

Residential Customer for Bedford
Bedford, MA 01730

TELEPHONES

If you wish to contact:	Call:	High School Principal - Jonathan Sills	781-275-1700 Ext. 115
Superintendent of Schools - Maureen LaCroix	781-275-7588	Director of Pupil Personnel Services - Barbara Koren	781-275-1700 Ext. 159
Assistant Superintendent - Vicki Simms	781-275-2155	Director of Adult Education - Mary Hurley	781-275-1700 Ext. 100 781-275-8659
Director of Finance - John Antonucci	781-275-7708	After 4 p.m. the main switchboard of the High School is shut down. The following information will enable you to make contact with the appropriate staff member at that time:	
Davis School Principal - Ethel Furst	781-275-6804		
Lane School Principal - Thomas Nolan	781-275-7606	Superintendent's Office	781-275-7588
		High School Office	781-275-1700 Ext. 114
		High School Receiving Room	781-275-1702
		Director of Athletics	781-275-1700 Ext. 131
		Middle School Office	781-275-1700 Ext. 154
Middle School Principal - Thomas Campbell	781-275-1700 Ext. 154	These numbers apply only to the High School and Middle School. All other schools can be reached by calling their regular numbers.	