



**John Glenn Middle
School**

INTRODUCTION

The John Glenn Middle School, in general, is a well planned, efficient building. Built in 1966, with a major addition and renovation in 2003, it has an overall building plan that is simple, direct, and logical.

The current enrollment of 559 will grow to 610 at the peak in 2016. . Classroom sizes are adequate and are expected to appropriately serve educational needs into the foreseeable future.

Unmet needs are primarily in elective learning areas and special needs program areas.

OPTIONS

The following chart outlines room-by-room space deficiencies, proposed reassignments of selected rooms, notes characterizing the proposed changes, and the timing for the change. Some of the proposed changes are linked to each other, as the creation of the right-sized space to serve an educational program need is often dependent on freeing up space in another area of the building.

Space adjustments include:

- Conversion of Computer Lab to Classrooms with auxiliary Office and Storage spaces
- Conversion of Tech Ed Shop into a Tech Ed/Robotics Room, to reflect current educational programs
- Folding wall added to Multi-Purpose Room to give it added flexibility for instructional uses
- Creation of Music Room from small underutilized storage spaces
- Enclosure of basement Storage area to reduce humidity problems
- Minor partition additions or removals

The Options first outline proposed solutions for unmet needs for current programs, followed by space needs for proposed programs.

4 John Glenn Middle School



The total additional space required to meet needs in the third phase, within five years, is:

- 1,300 SF net
- 1,950 SF gross, allowing 1.5 mark-up for corridors, wall thickness, and mechanical spaces

SPACE NEEDS								TIMING		
F/LR	RM #	CURRENT USE	SIZE in SF	DEFICIENCIES	PROPOSED USE	NOTES	SF UNMET NEEDS	Fall '10	Within 3 Yrs	Within 5 Yrs
CURRENT PROGRAMS								TIMING		
1A	A111	SP ED	446	Small: 9 students + 2 adults	Same	Remove internal partition + casework to improve functionality				X
	A111A	SP ED	109							
1B	B124	TEACHER PLANNING	173	Underutilized	Itinerant Tchrs	Separate rooms with partition/door				X
	B125	ITINERANT TEACHER RM	1200	Holds 6; Need space for 6 with other adjustments	Small Group/Learn Ctr					
		BASEMENT STOR		Damp	Storage	Install floor and partition				X
2A	A211	SP ED	434	9 students + 2 adults	Same	Remove internal partition + casework to improve functionality				X
	A212	SP ED	110							
	A213	COOKING, F LANG, LIFE SKLS	971	Too small	Cooking, Life Skills	Relocate F Lang to B 215 or B224			X	
2B	B204	CLASSROOM	766	Crossroad Classrm too small		Relocate to B227				
2B	B212	SPED LEARNING CENTER	421		Transitions	Relocate Learning Center to Lib		X		
	B214	SPEECH/ LANG	79	Too small	Psychologist	Speech to share Adj Counselor Office		X		
	B215	PSYCH	78	Too small	Transitions Office	Relocate Psych to B214		X		
	B216	COMPUTER LAB	1132		Classroom, Office, Stor	Laptop computers eliminate need for Labs; partition to make Office + Stor			X	
	B224	COMPUTER LAB	1125		Classroom, Office, Stor	Laptop computers eliminate need for Labs; partition to make Office + Stor			X	
	B227	LABBB COLLAB	784		Transitions	Relocate LLABBB to D211			X	
	B232	CONF	167	Keep as Conf	Conference					
	B233	ACADEMIC INTERVENTIO	199	Small	Acceptable as is					



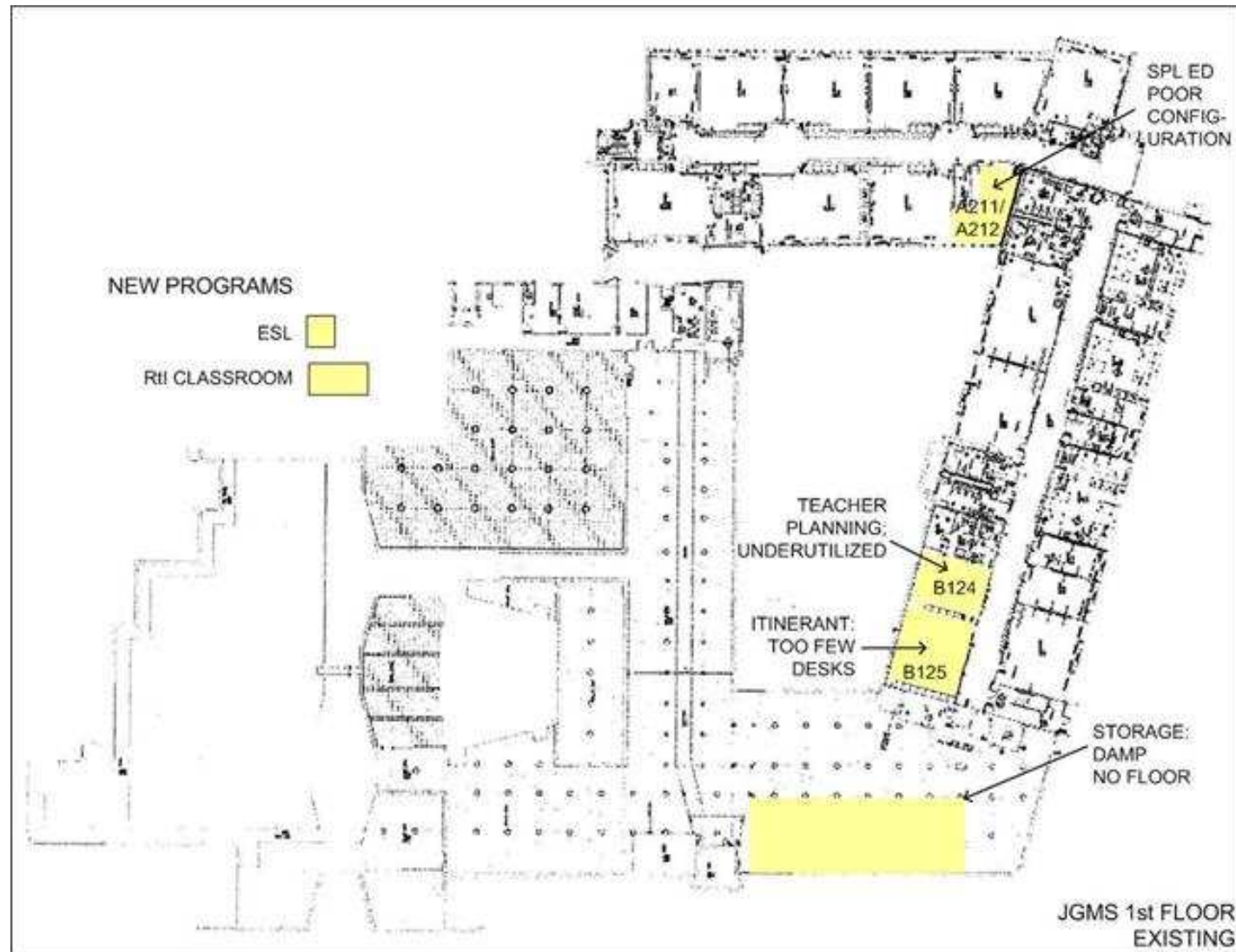
4 John Glenn Middle School



SPACE NEEDS								TIMING		
FLR	RM #	CURRENT USE	SIZE in SF	DEFICIENCIES	PROPOSED USE	NOTES	SF UNMET NEEDS	Fall'10	Within 3 Yrs	Within 5 Yrs
CURRENT PROGRAMS								TIMING		
	B244C	BREAKOUT/ READING	125	Too small	Need not met					
	B246	METCO + SRO	203		Learning Center	Expand. Relocate door so not behind column. Add ceiling. Relocate METCO to home base at HS.		X		
2C	C203	CORRIDOR		Ad hoc music/drama storage		Add instrument cabinets			X	
	C225a	CORRIDOR		Ad hoc music/drama storage		Create linear Storage Room with partition/doors			X	
2C	C228	AUDITORIUM	3856	Used for Chorus	Aud only	Relocate chorus to new Music Room			X	
	C230	STAGE	1786	Used for Chorus	Band	Relocate chorus to new Music Room			X	
	C236	PREP	402	Current spaces underutilized	New Music Room	Underutilized; Consolidate to make 2nd Music Room; 841SF available; MSBA guideline 1500SF total for school			X	
	C237	INSTRUMENT STORAGE	199							
	C238	OFFICE	123							
	C239	ARCHIVE	117							
	C240	LARGE GROUP INSTRUCTION	2095	Used for Music, F Lang	Multi-Purpose	Restore to Multi-Purpose use by reassigning functions to appropriate Classrooms and Music Rm; add folding wall		X		
2D	D204	SP ED TRANSITIONS	330	Too small; poorly located	ELL, Office	Use acoustical divider panel; relocate Transitions to B212		X		
	D211	TECH ED/ F LANG	807	Too small	Classroom	Possible uses: F Lang, Life Skills, LABBB			X	
	D213	TECH ED SHOP	1224		Tech Ed Robotics	Oversized for current use			X	
	D217	CAFETERIA	3594	Seats 240 @ 15SF/seat; used for pilates, chorus	Café	Use as Café only; relocate chorus to new Music Room			X	
PROPOSED PROGRAMS								TIMING		
				Small ESL Classrm	Need not met	Use D204 in short term; build later	500	X		X
				Small Rtl Classrm	Need not met	Use D204 in short term; build later	800	X		X
						TOTAL NET SF	1300			
						TOTAL GROSS SF	1950			

LAYOUT PLANS

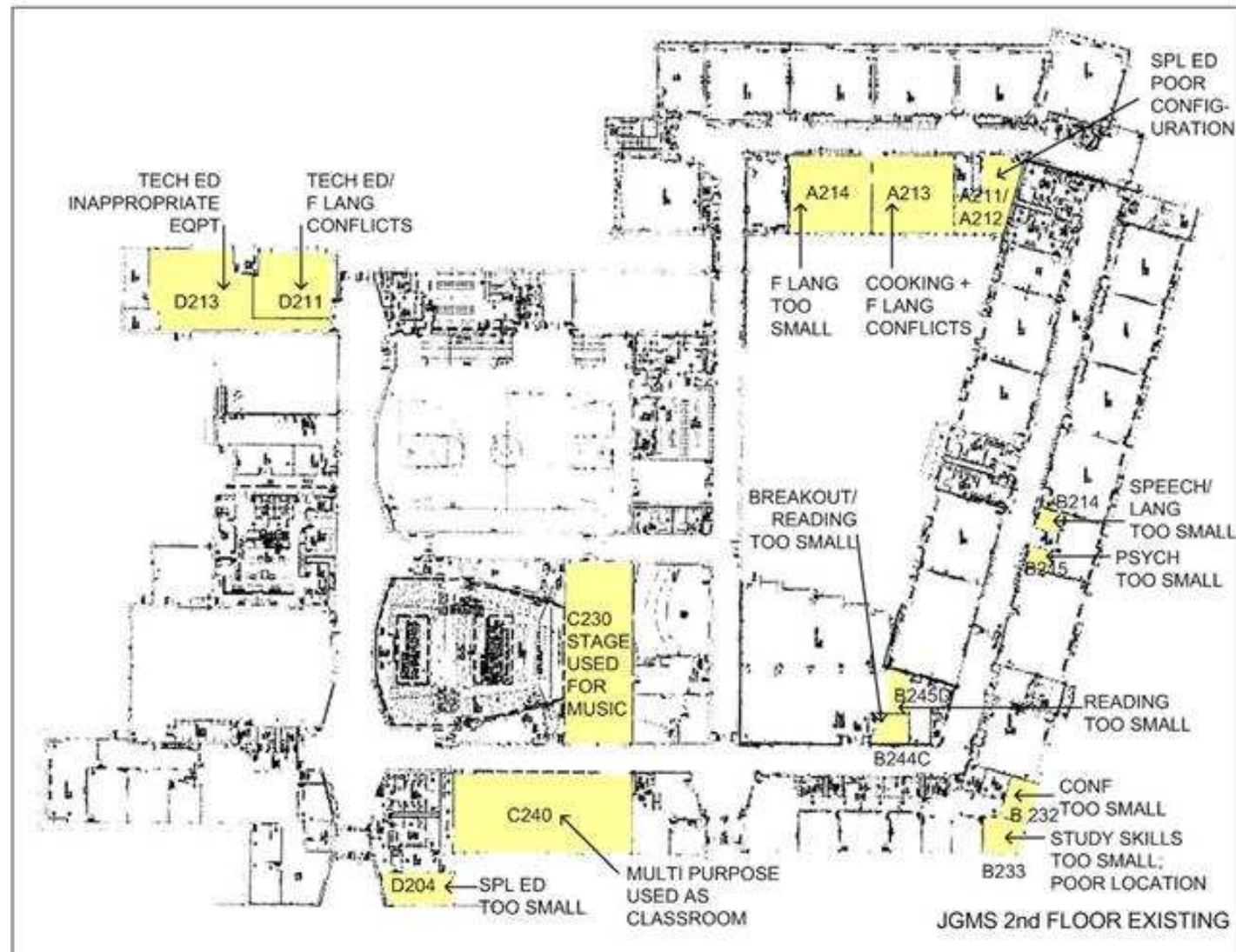
The plans which follow correlate with the Options outlined above. Unmet needs:



4 John Glenn Middle School



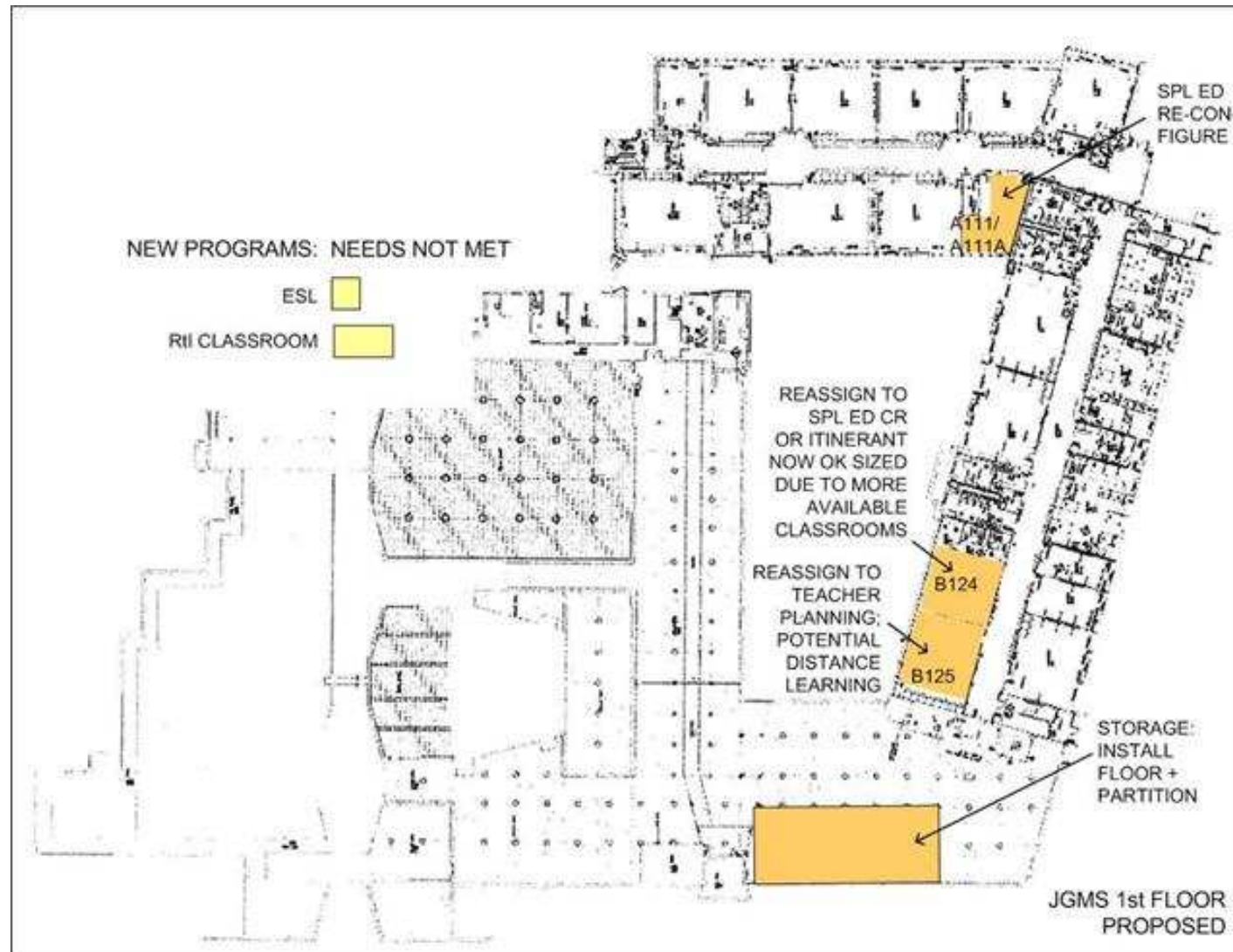
Unmet needs:



4 John Glenn Middle School



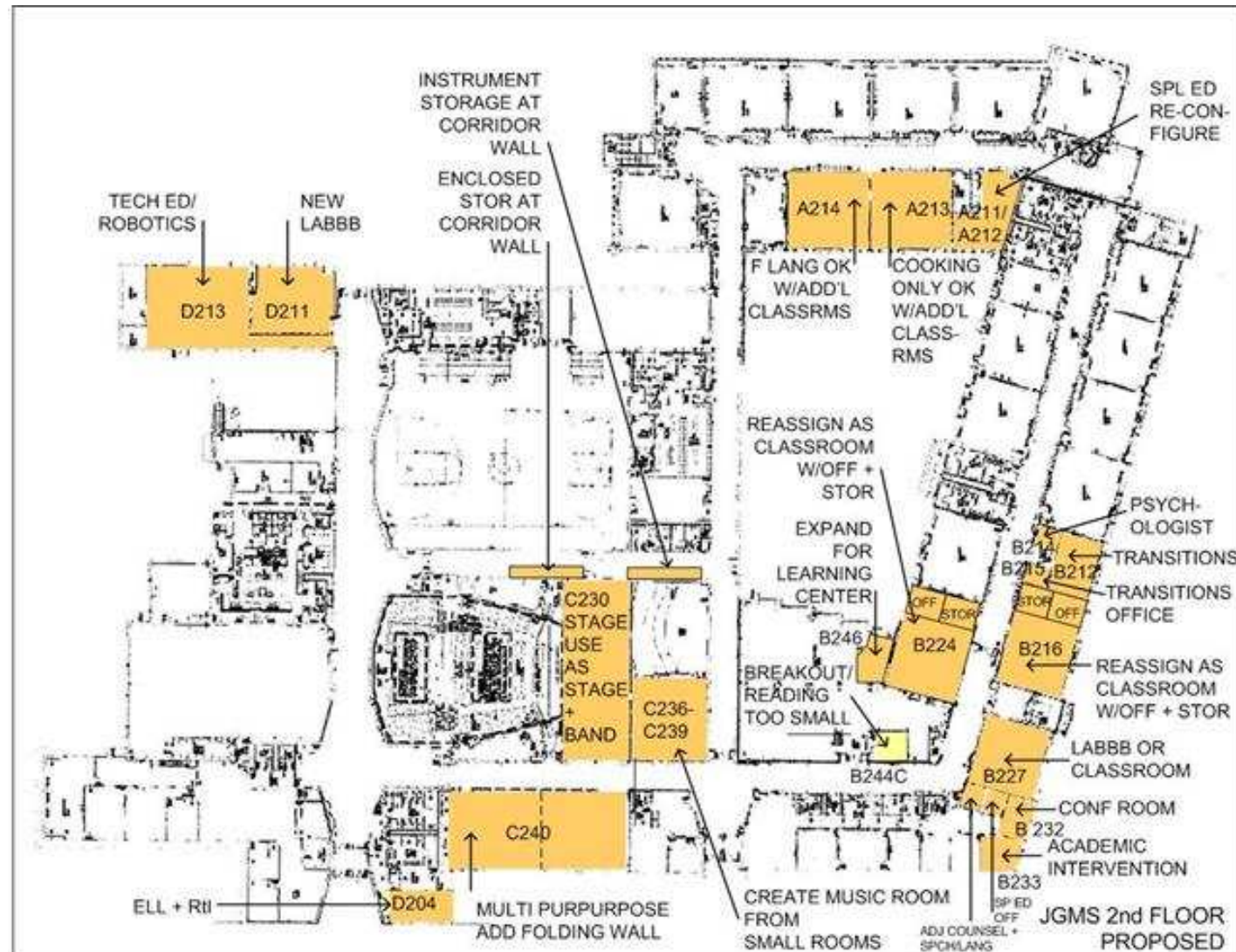
Proposed Options to meet needs:



4 John Glenn Middle School



Proposed Options to meet needs:



4 John Glenn Middle School



Proposed Options to meet needs, third phase, within five years:

